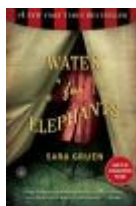


Reading Challenge 2011

Take a break from reading another chapter in your textbooks and join the Reading Challenge! To participate, just choose a book from the five selections listed below. Pick up your free copy of the book on April 1st and then read it during the month of April. Complete the entry form on our webpage and you will be entered in a drawing for prizes!



Stop by the table by the Service Desk to view the book titles and descriptions. Complete the sign-up sheet with your name, book selection, and email address. You will be able to pick up your book selection in the library starting on April 1st. Once you have finished the book, go to our webpage and complete the entry form. Besides receiving an awesome free book for your personal library, there will be drawings from the entries received for prizes including bookmarks, gift cards, and a Kindle!!!

Inside this issue:

<i>Food For Fines</i>	2
<i>Late Nights</i>	2
<i>LibQUAL</i>	2
<i>Language & Travel</i>	3
<i>New DVDs</i>	3

National Library Week: April 10th-16th

Beginning in 1958, National Library Week is a national observance sponsored by the American Library Association and libraries across the country each April. During the week of April 10th-16th, the Blackmore Library will host programs and activities in honor of National Library Week. Stop by and create your own story at the Blackmore Library!

In honor of St. Patrick, we will be serving green popcorn!

Wednesday, March 16th
3-4 pm



For more National Library Week information, visit the ALA website <http://www.atyourlibrary.org/>



L₂ I₁ B₃ R₁ A₁ R₁ Y₁₀
G₂ A₁ M₃ E₁ B₃ R₁ E₁ A₁ K₃

What: Wii, Board Games, Snacks, and Prizes!
When: Wednesday, April 13th from 3 pm - 6 pm
Where: Blackmore Library Classroom (BLC)

Free Cookies for NLW!
Thursday, April 14th
3 pm

Book Drive for Troops

Donate your new or gently used paperbacks to be shipped to our troops serving overseas. Look for the donation table and more information beginning April 11th!





Food For Fines Returns for Spring



Pay your library fines with food for the needy! From March 21st through April 3rd, students can donate unopened, non-perishable, and non-expired cans, boxes, and envelopes and get money off their overdue fines. For example, bring 2 cans of food to the Service Desk and get \$2 off your overdue fines. There's no limit on how much you can give! We do not accept beverages or allow "on credit" donations toward future fines. Credit will not be applied towards fees for lost or damaged items. All proceeds help the local food banks and are greatly appreciated!

Late Nights @ the Library!



Late Nights @ the Library return for Spring Finals week. The Blackmore Library will be supplying free coffee, bagels, and a sweet surprise each evening starting at 9 pm. Blackmore Library will also be open 24 hours a day during this time. The Blackmore Library will open at 1 pm on Saturday, April 30th until Midnight on Wednesday, May 4th. Treats will be provided Saturday - Tuesday. Remember, if you need help with your research assignments, you can ask a librarian in-person, by phone, or by email. Also, check the Research Assistance link on our webpage for information on our Research Workshops and Research Consultations for in-depth one-on-one or group research assistance.

The Library will be open 24 Hours starting at 1 pm Saturday, 4/30 until Midnight on Wednesday, 5/4.

Tell Us What You Think!

In support of Capital University's accreditation process, Blackmore Library is participating in the LibQUAL+® Survey. The survey will run from the middle of March through the end of April, and all Capital University students, faculty, and staff will be invited to participate.

LibQUAL+® is a web-based questionnaire developed by the Association of Research Libraries to measure library user perceptions of service quality. The survey includes questions about service, information control, and the library as a place, as well as additional items that address information literacy, library use, and general satisfaction. To date, more than 1,000 libraries have participated in LibQUAL+®, including Blackmore Library in previous years.



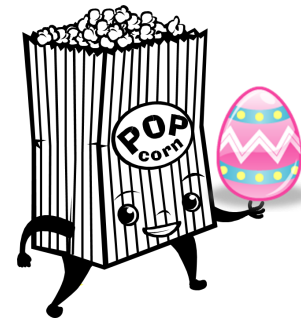
Those who take the survey will have the option of entering a drawing for one of the following great prizes:

- iPod Nano
- \$50 Visa Gift Card
- \$10 Graeter's Gift Card

The results of the survey will help the library respond to and anticipate the needs and expectations of our users. Our thanks go out in advance to those who choose to participate in this important assessment tool!!

Holiday Popcorn!

To celebrate Easter, we will be serving colored popcorn with a special surprise!



Wednesday
April, 13th
3 pm - 4 pm

New Language and Travel Resources

Thinking about going abroad next year or taking a trip this summer? Check out our updated language CDs and travel guides. The Blackmore Library now has an array of language learning materials that allow you to teach yourself many languages, such as Russian, Portuguese, Japanese, and more! Look for these self-instruction books and sound recordings in the Browsing section located on the 1st Floor.



For those planning a trip, try one of our new National Geographic travel guides to Australia, Germany, Mexico, and more! The travel guides can be found in the 900's on the 3rd Floor. Look for a travel display in April showcasing many of our new resources!

Coming Soon... Rick Steves' Europe! All 80 shows produced from 2000-2009, plus specials and travel lectures will be available on DVD in the Blackmore Library soon! Rick Steves' Italy guidebooks will also be making their way to our collection this year.



Database Spotlight

Criminal Justice Abstracts with Full Text

Criminal Justice Abstracts with Full Text is a new EBSCO database that covers publications on criminology, criminal justice, criminal law and procedure, forensics, corrections, probation and parole, substance abuse, and the history of crime. *Criminal Justice* can be accessed from the A-Z listing of databases by clicking the Find Articles link on the Library webpage.

New Items of Interest

Check out some of the following DVDs that have been added to the library collection:



791.45 B389



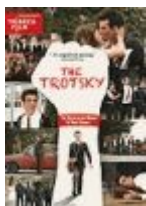
791.45 Id4



791.45 In17



791.45 M337



791.45 T755



791.45 So13



B J1328m



J T6683



J D468



791.45 R895



791.45 P926



370.973 W135

<http://>
On the Web

Now you can get APA style help without logging off Facebook! You can "Like" the APA Style page on Facebook here: <http://www.facebook.com/APAStyle>. Besides the style advice found on their wall, the APA Style page also links to helpful tutorials, sample papers, and even online courses! This is the official Facebook companion of the Publication Manual of the American Psychological Association; you can also follow them on Twitter here: http://twitter.com/APA_Style.

To see all of the new items added to our collection, go to <http://charli.capital.edu/ftlist>