

Capital University

CU APARTMENTS

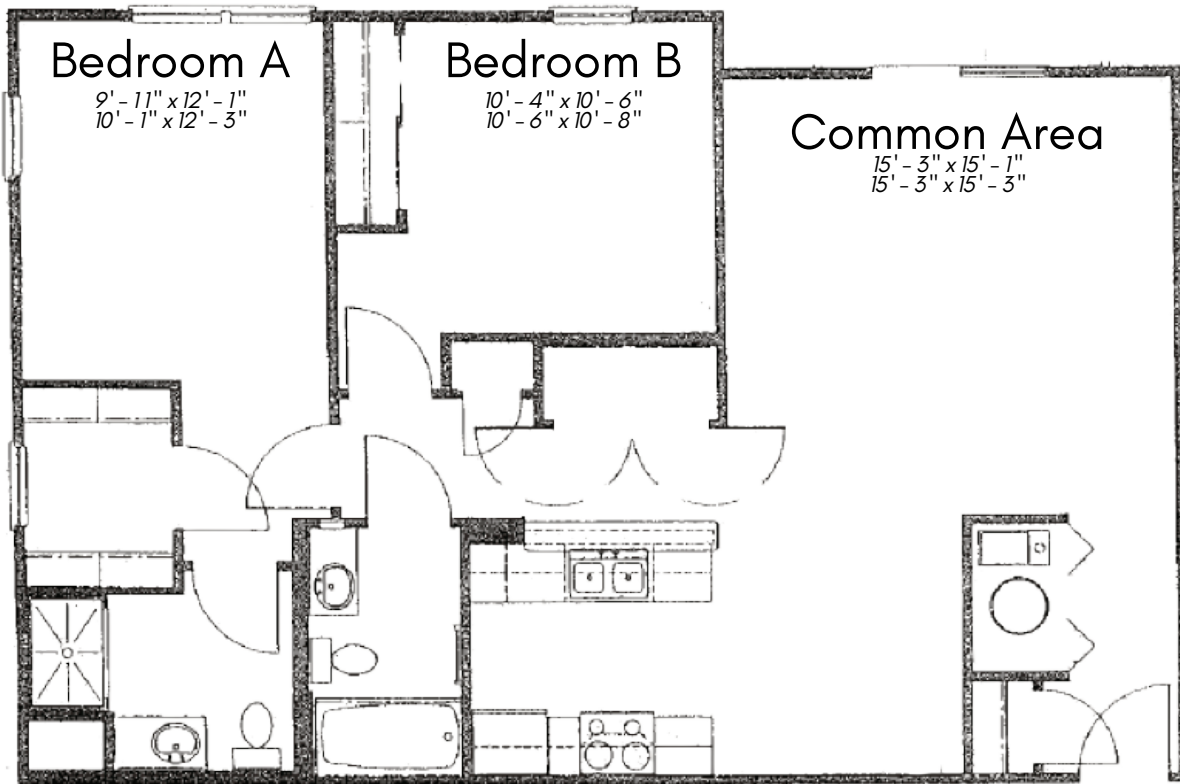
Floors 1, 2, and 3 have the same layout.

A bolded and starred letter signifies the Unit Letter (***A**) while an unmarked letter signifies a bedroom letter.

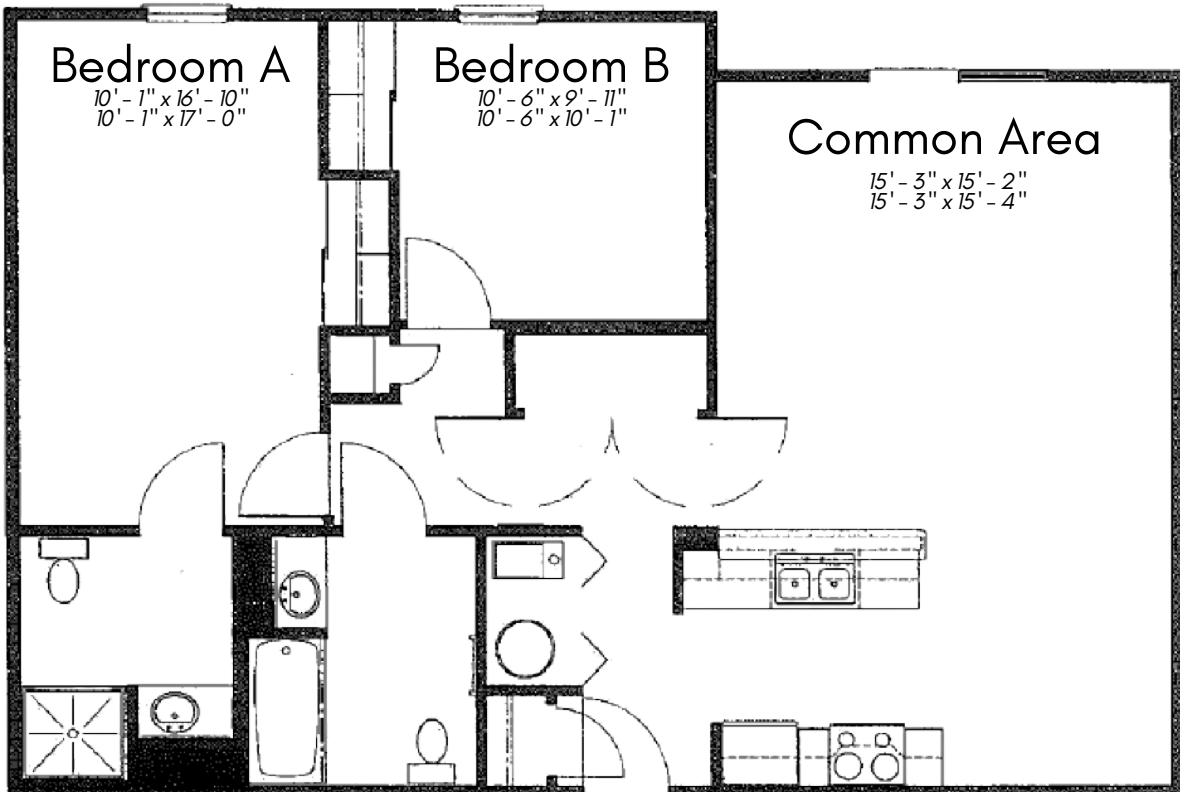


Capital University

CU APARTMENTS



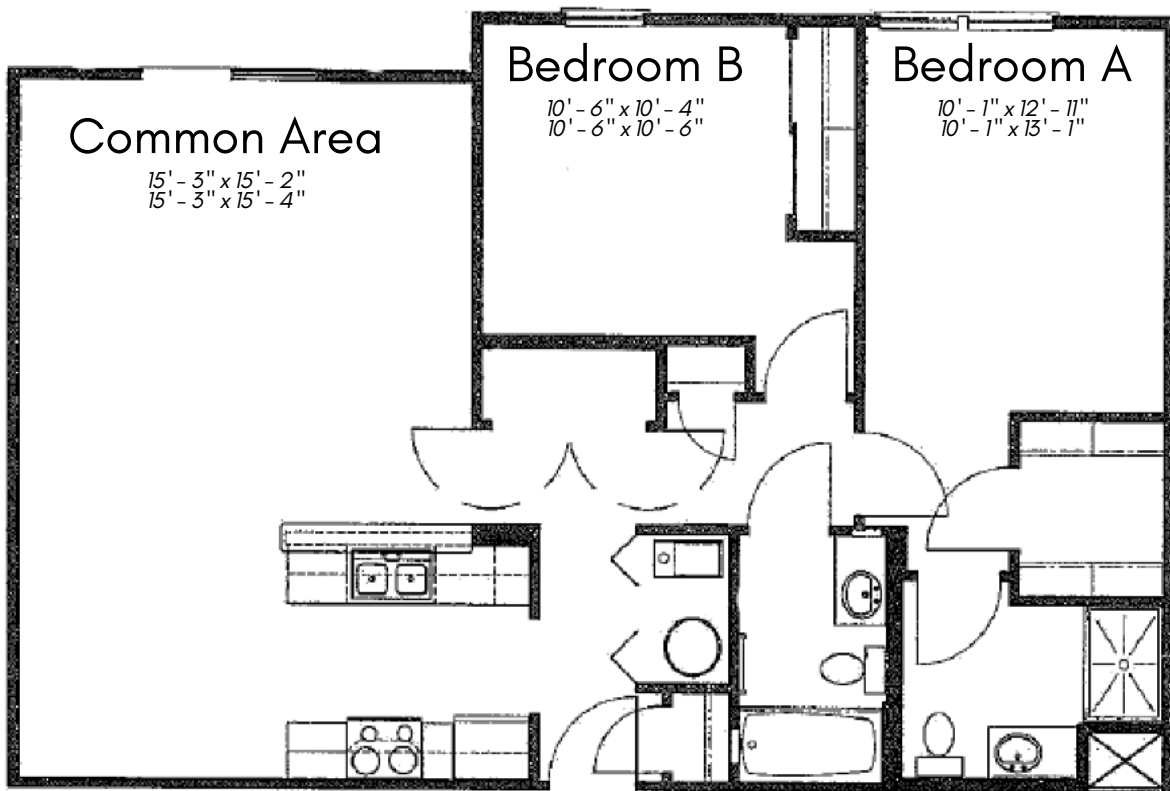
1A, 2A, 3A



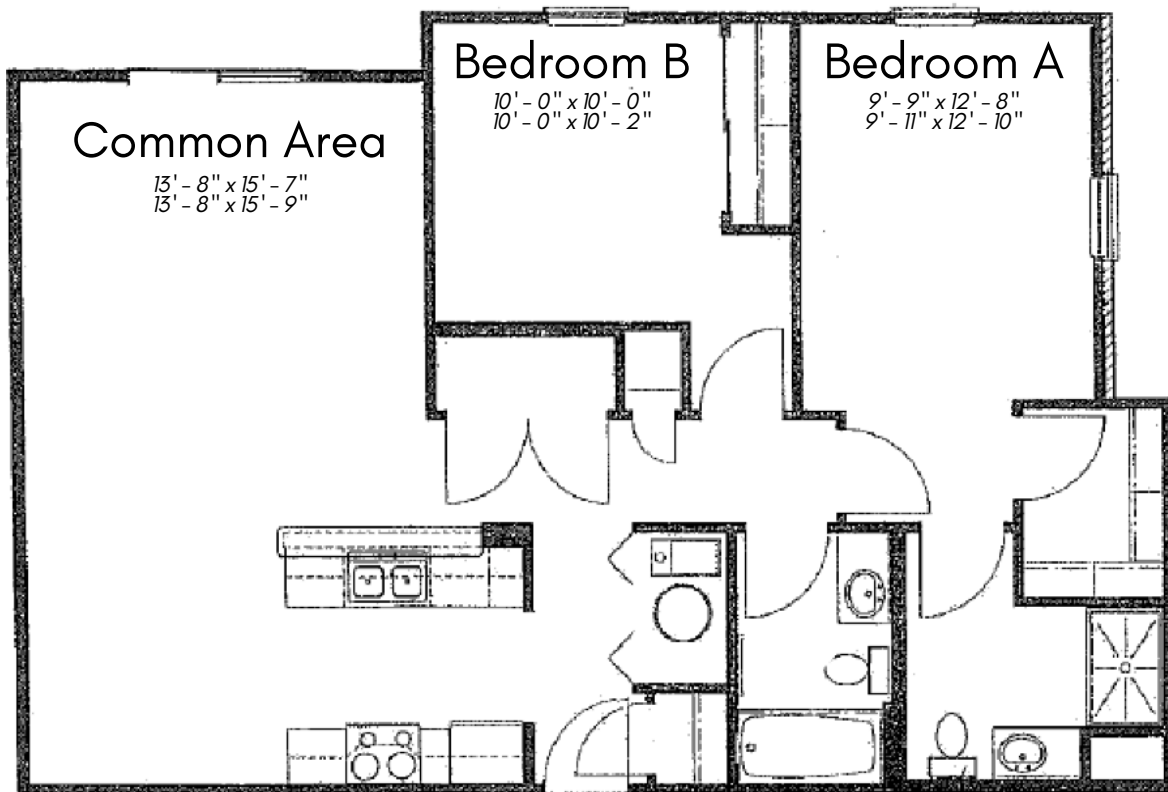
1B, 2B, 3B

Capital University

CU APARTMENTS



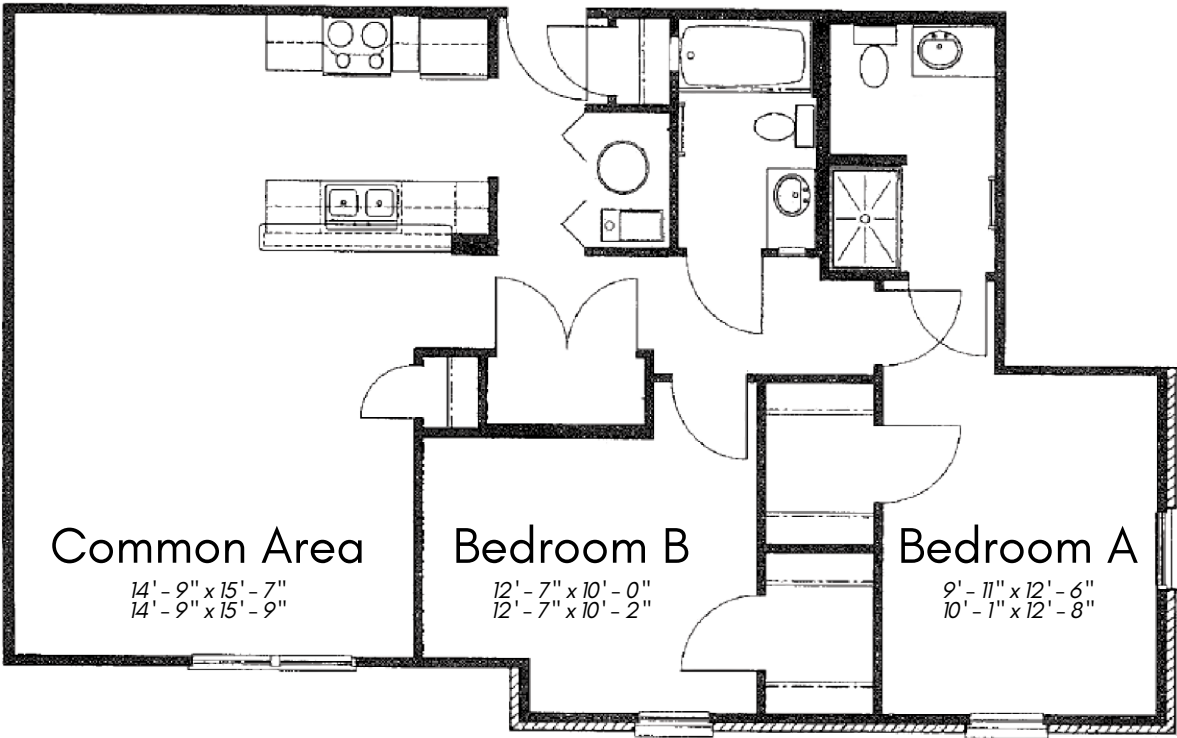
1C, 2C, 3C



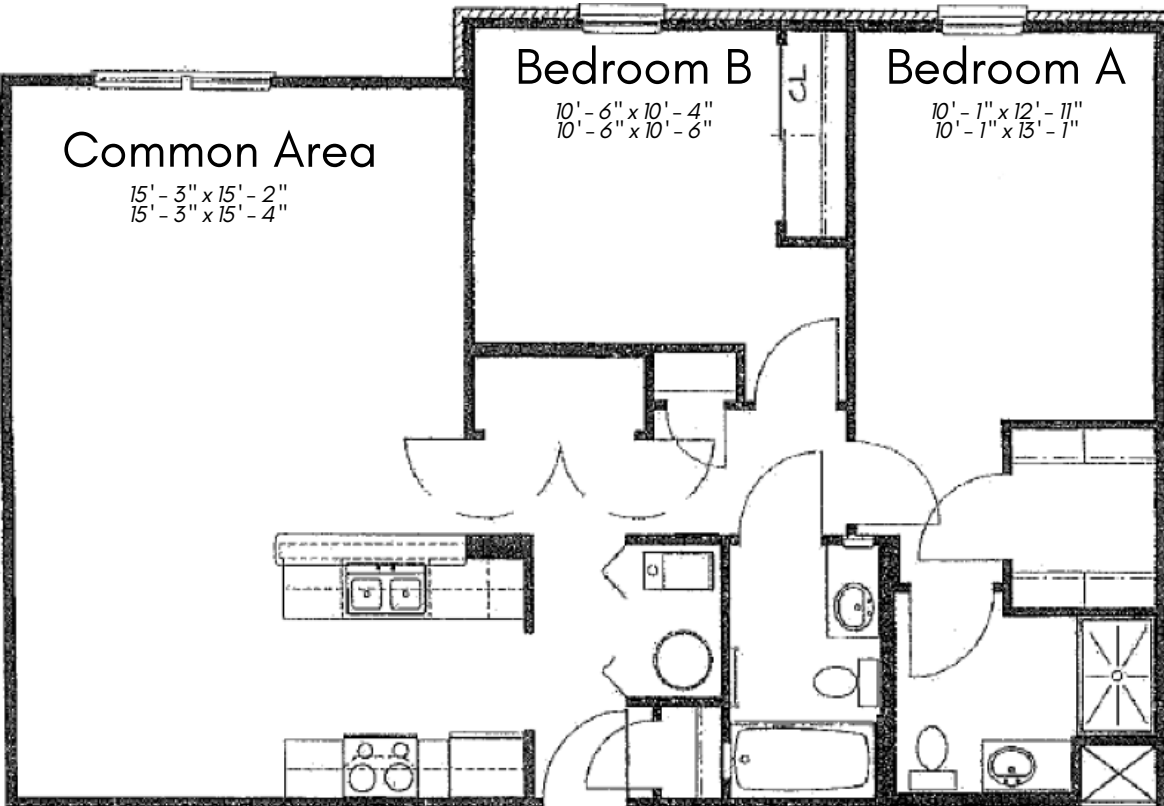
1D, 2D, 3D

Capital University

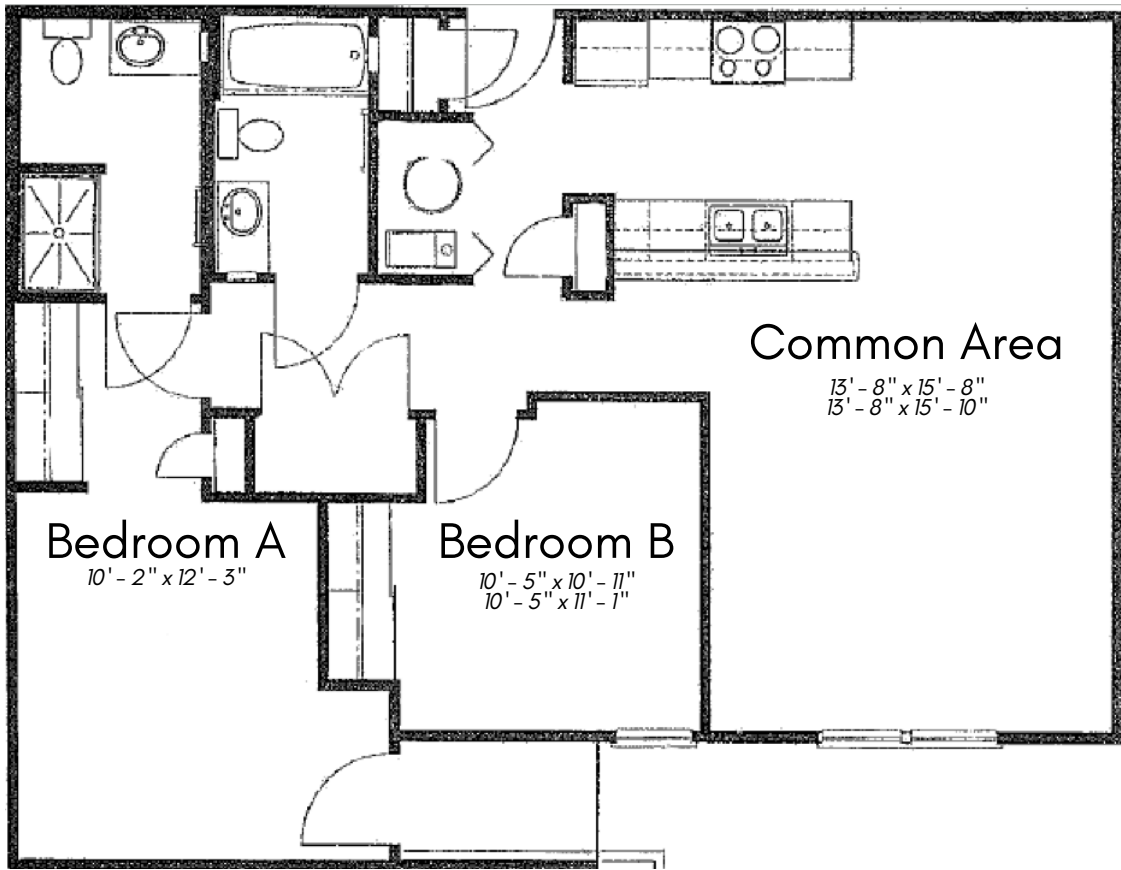
CU APARTMENTS



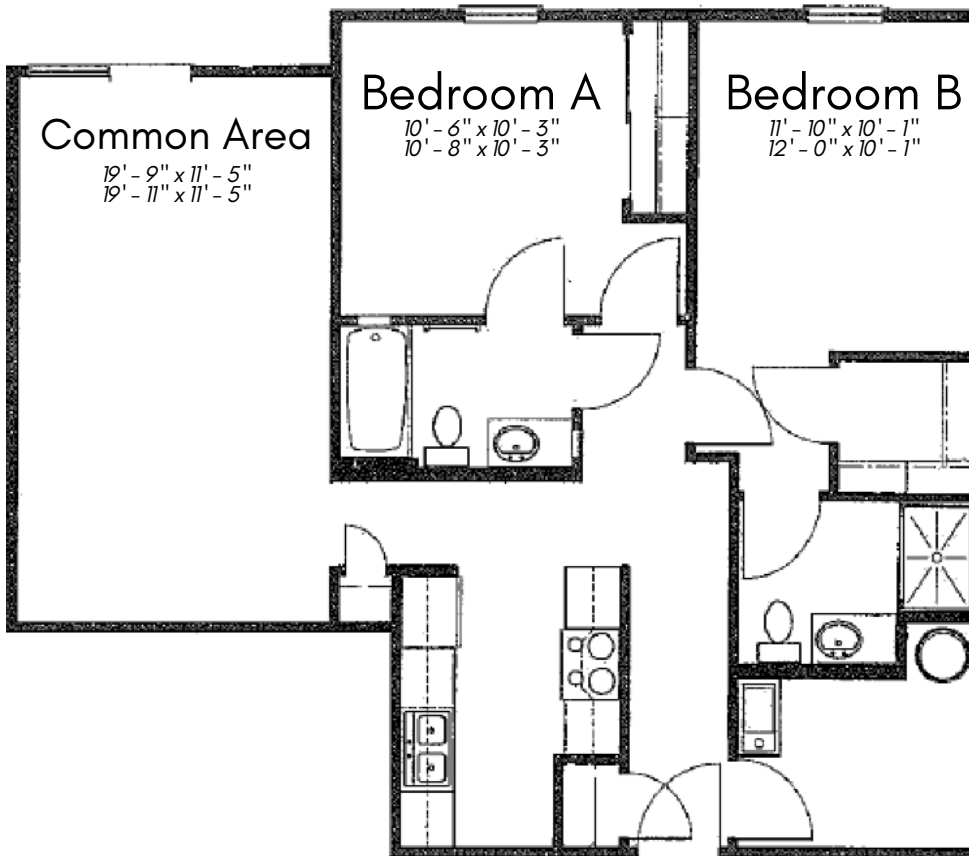
1E, 2E, 3E



1F, 2F, 3F



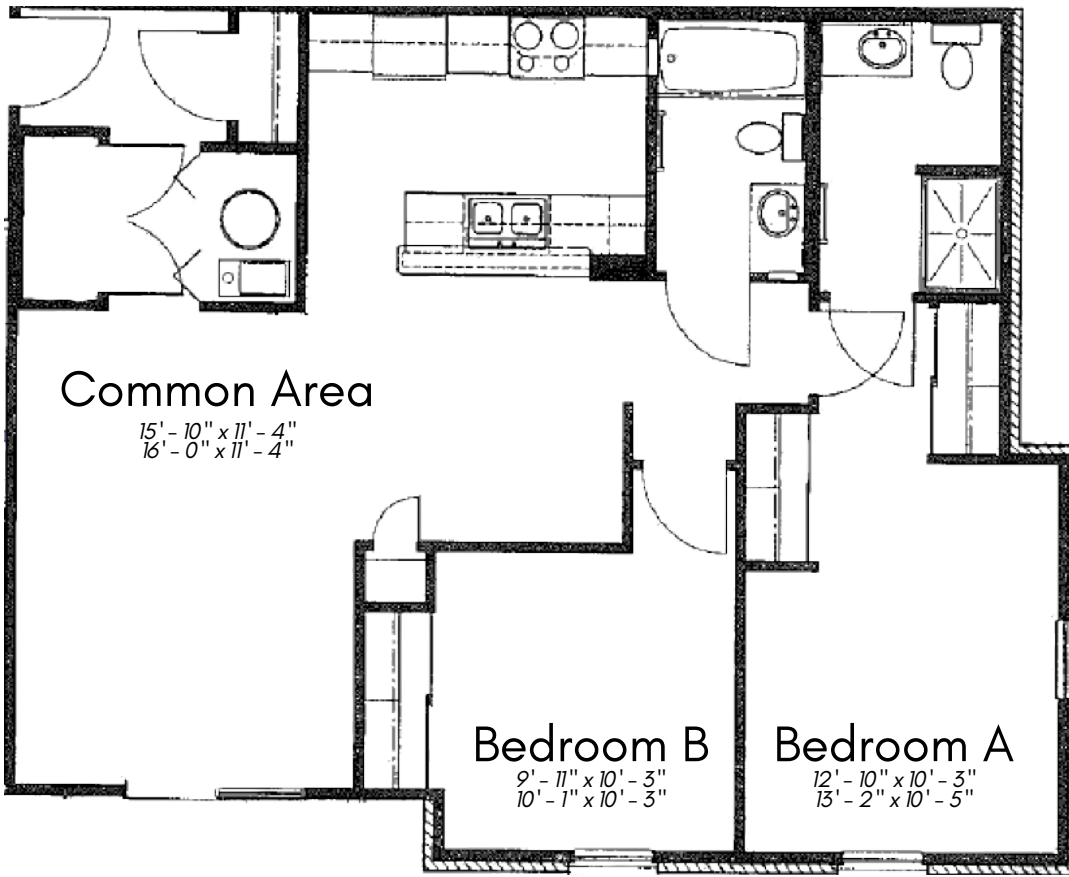
1G, 2G, 3G



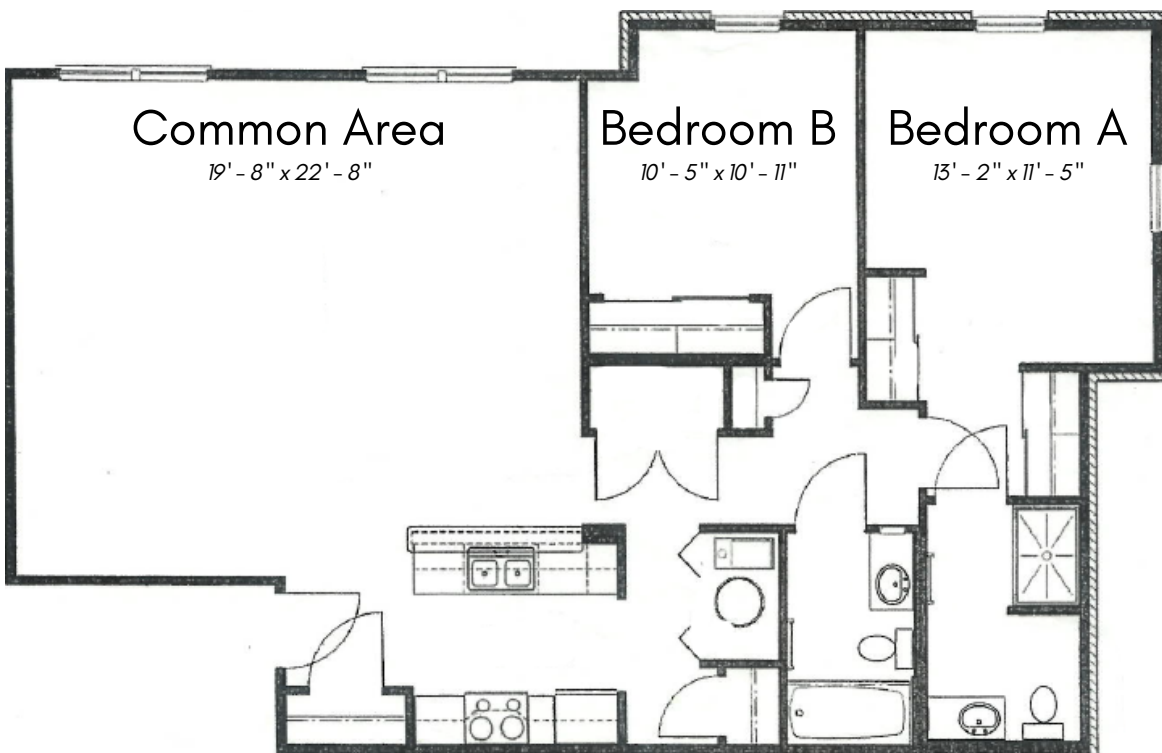
1H, 2H, 3H

Capital University

CU APARTMENTS



1J, 2J, 3J



1K, 2K, 3K